

GREIF BROS. COOPERAGE CORP.

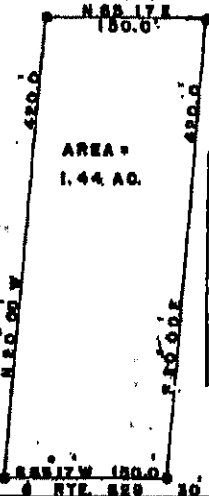


← 400' TO E. OAK

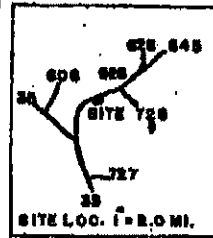
REFERENCE
D.B. 142 P. 456

● IRON PIN

BEATRICE A. RICKS



GREIF BROS.



← 400' TO E. S. GUM
← 0.5 MILE TO RTE 728 ← 150' TO RTE 629 ← 10' R.O.W. TO RTE 38

APPROVED

Southampton County Platte

J. E. Henry

PLAT SHOWING PROPERTY OF

HENRY BLOW GRIFFIN &

EARLINE G. GRIFFIN

JERUSALEM MAGIS. DISTRICT

SOUTHAMPTON CO., VIRGINIA

SCALE 1" = 100' JUNE 14, 1969

SURVEY BY J. E. HENRY C.L.S.

VIRGINIA: In the Clerk's Office of the Circuit Court of Southampton County, the 21st day of August, 1969. This Plat, showing property of Henry Blow Griffin and Earline G. Griffin in Jerusalem Magisterial District was this day received and admitted to record together with the foregoing Deed.

Teste: *R. D. Williams* Clerk